

Luminaire Property

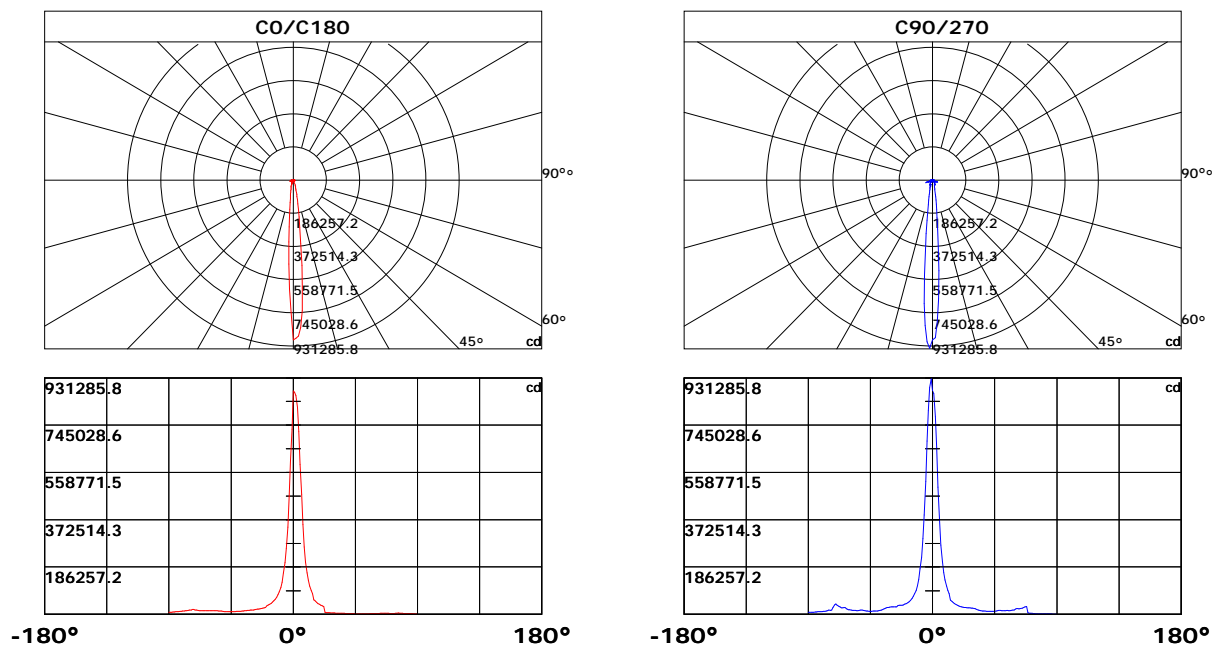
Luminaire Description: T500-960W-10D
Luminaire Categorie: LED FLOOD LIGHT
Lamp Categorie:
Lamp Description: T500-960W-10D
Number of Lamp: 1
Lamp Lumens(lm): 119350.3
Luminous Length(m): 0.846
Luminous Width(m): 0.579
Luminous Height(m): 0.202

Voltage: 219.3 V
Current: 4.36 A
Power: 958.3 W
Power Factor: 0.964
Test Lab: Huipu-lab
Photometric Type: Type C
Manufactory: SHENZHEN COMING TECHNOLOGY CO., LTD

Photometric Results

CIE Class: Direct
Measurement Flux: 119350.30 lm
Efficiency: 124.5438 lm/W
Central Intensity: 880922.6cd
Max. Intensity: 931285.734cd
Field Angle(10%Imax): Left: -11.6 Right:11.7

Max.Intensity Angle: C:240.0 G:1.0
Beam Angle(50%Imax): L: -5.0 R:4.9
Luminaire Efficacy Rating(LER) : 100.00%
Upward Ratio: 0.0%
Downward Ratio: 100.0%



Light intensity data Unit[cd]

C\G	G0.0	G1.0	G2.0	G3.0	G4.0	G5.0	G6.0	G7.0	G8.0	G9.0
C0.0	880922.5	873476.4	860792.8	814108.9	720585.6	590413.5	473143.2	353005.5	265037.5	205678.4
C30.0	880922.5	782290.3	653551.9	526340.1	397009.4	294610.9	219513.0	170373.7	137304.0	115609.5
C60.0	880922.5	830594.9	718061.3	580098.0	453385.0	334151.4	244430.0	197434.8	160412.0	124580.7
C90.0	880922.5	869331.9	778550.7	657041.9	500972.4	370177.2	272822.5	207832.3	164261.5	134856.9
C120.0	880922.5	869175.7	774374.8	654143.7	527493.3	390651.9	287498.9	223238.6	180138.8	138278.2
C150.0	880922.5	807626.7	698334.5	572463.0	440109.2	319364.7	243673.7	187167.4	149890.2	124081.1
C180.0	880922.5	729779.1	601539.0	464074.4	343033.2	259077.4	202701.2	162686.7	126653.4	105389.3
C210.0	880922.5	927795.2	926704.7	878307.1	787058.4	647163.1	500505.0	364068.9	276529.0	205443.8
C240.0	880922.5	931285.7	915828.2	847267.7	745423.2	602629.6	463887.5	331757.2	244385.4	191362.7
C270.0	880922.5	927203.4	893577.1	803793.5	681661.6	523254.9	390558.4	297783.0	224454.0	179110.4
C300.0	880922.5	915298.6	867025.4	778208.0	642052.3	495144.6	377313.4	270987.0	206202.8	165909.9
C330.0	880922.5	890274.0	854715.8	767425.1	660844.2	516679.1	392989.2	301522.7	233335.8	184127.6
C360.0	880922.5	873476.4	860792.8	814108.9	720585.6	590413.5	473143.2	353005.5	265037.5	205678.4
C\G	G10.0	G11.0	G12.0	G13.0	G14.0	G15.0	G16.0	G17.0	G18.0	G19.0
C0.0	163443.9	134606.9	111601.2	93658.7	80929.2	57057.9	51663.2	47107.2	42724.5	38764.3
C30.0	96904.9	81884.4	57676.6	52172.5	47557.4	42967.1	39246.4	35834.3	33270.4	31034.5
C60.0	105064.7	87964.9	75753.7	66907.2	58279.0	52042.4	47035.3	42765.1	38794.3	36135.1
C90.0	111445.1	93533.9	81010.4	56240.7	50846.0	46163.9	41764.9	38105.5	35119.0	32309.4
C120.0	116364.9	97248.4	83345.0	70952.5	62218.5	54733.0	49157.8	44119.8	40049.4	37059.0
C150.0	104259.5	87765.2	60969.1	54687.5	49426.0	44982.0	40738.7	37133.5	34342.9	31575.2
C180.0	88764.0	77520.3	67656.5	58329.3	52984.8	48096.8	43645.3	39780.8	37221.3	33893.5
C210.0	166395.5	130211.9	107099.9	91829.4	77757.6	66413.7	59652.7	53072.6	47740.9	43969.9
C240.0	151251.1	122632.8	103198.0	87240.8	59553.1	53999.6	48736.7	43797.0	40117.8	36405.4
C270.0	138384.0	112718.7	94145.6	81110.0	70141.1	61875.4	55082.7	49120.8	45543.4	42615.2
C300.0	133202.3	108904.1	92254.1	79412.2	55863.2	50906.0	45920.0	41779.0	38476.4	35256.2
C330.0	144196.4	118493.6	99034.0	85112.1	73456.0	64310.1	57423.9	52111.2	47522.2	44406.9
C360.0	163443.9	134606.9	111601.2	93658.7	80929.2	57057.9	51663.2	47107.2	42724.5	38764.3
C\G	G20.0	G21.0	G22.0	G23.0	G24.0	G25.0	G26.0	G27.0	G28.0	G29.0
C0.0	35601.9	32865.5	30383.1	7466.1	6934.7	6490.6	6137.4	5807.1	5512.9	5281.9
C30.0	29346.8	27983.7	26932.3	26357.7	25691.3	25037.3	24657.6	24515.2	24202.1	23683.0
C60.0	34099.9	26553.9	25006.9	23582.5	22410.3	21289.7	20296.1	19445.0	18656.5	17986.2
C90.0	30259.7	28699.4	27906.9	26948.6	26434.4	25692.2	25237.1	25188.2	24452.6	24077.7
C120.0	34380.8	26805.3	25140.5	23636.3	22201.3	21137.6	20152.8	19174.7	18532.1	17720.7
C150.0	29907.7	28258.8	27225.1	26376.7	25678.5	24867.5	24286.3	23765.9	22958.5	22446.9
C180.0	27153.7	25597.0	24149.6	22842.9	21679.6	20742.9	19849.9	18933.0	18251.7	17558.4
C210.0	40348.9	38513.4	35273.4	33981.3	28045.4	27351.3	26996.7	26494.8	26331.2	25811.7
C240.0	33530.6	31158.9	7565.8	7006.6	6560.3	6117.6	5789.4	5499.3	5264.2	4982.9
C270.0	40199.4	37271.1	35516.8	35148.6	35086.0	34436.8	28868.7	28862.6	28686.6	29069.0
C300.0	32480.5	30383.1	7415.4	6871.2	6449.6	6079.2	5802.7	5545.6	5300.8	5050.3
C330.0	41454.0	37851.9	35941.5	34699.2	34580.6	27802.4	27349.9	27022.7	26210.4	26269.5
C360.0	35601.9	32865.5	30383.1	7466.1	6934.7	6490.6	6137.4	5807.1	5512.9	5281.9

Light intensity data Unit[cd]

C\G	G30.0	G31.0	G32.0	G33.0	G34.0	G35.0	G36.0	G37.0	G38.0	G39.0
C0.0	5025.2	4741.2	4521.1	4270.6	4074.0	3877.3	3663.8	3468.5	3261.6	3102.0
C30.0	22894.5	21630.6	19966.7	18420.1	16697.1	15693.9	14372.2	13474.3	12939.8	12787.7
C60.0	17203.9	16553.8	15998.2	15313.7	14768.2	14246.1	13737.1	13133.4	12594.1	12249.2
C90.0	23098.3	21253.1	19610.8	17470.7	15622.0	14052.5	13155.9	12820.3	12333.4	12143.8
C120.0	17000.1	16318.8	15744.1	15140.4	14495.2	13852.7	13266.6	12755.9	12196.3	11858.0
C150.0	21035.7	19515.6	17550.9	16044.5	14603.3	13715.5	12873.2	12563.6	12025.6	12079.4
C180.0	16937.5	16303.8	15704.9	15232.1	14195.8	13685.6	13054.0	12683.2	12232.9	11902.1
C210.0	24953.1	24462.7	23646.4	22427.9	20731.4	19077.7	16985.1	15539.1	14347.9	13572.2
C240.0	4774.3	4500.4	4209.8	3986.2	3727.8	3498.9	3278.4	3061.9	2889.0	2695.0
C270.0	28648.7	28215.2	27532.1	26022.1	24392.2	22039.4	19554.4	17169.0	15004.6	13824.9
C300.0	4829.8	4548.5	4308.1	4051.5	3811.1	3550.9	3375.0	3147.4	2967.9	2784.0
C330.0	26028.3	25335.5	24615.7	23720.5	22645.3	21338.7	19709.2	17968.5	16504.9	14427.3
C360.0	5025.2	4741.2	4521.1	4270.6	4074.0	3877.3	3663.8	3468.5	3261.6	3102.0
C\G	G40.0	G41.0	G42.0	G43.0	G44.0	G45.0	G46.0	G47.0	G48.0	G49.0
C0.0	2937.9	2773.4	2621.3	2515.0	2424.2	2334.2	2254.8	2192.2	2134.9	2083.3
C30.0	12438.0	12355.1	12162.3	12243.0	11991.7	11797.6	11797.6	12171.2	13094.2	14343.1
C60.0	11993.9	11657.0	11357.5	11204.5	10999.4	10933.7	10620.6	10531.5	10300.0	10111.7
C90.0	12015.5	11775.1	11567.9	11436.9	11498.6	12113.4	13006.4	14692.8	15652.4	15481.3
C120.0	11601.8	11278.6	10994.1	10930.2	10648.4	10401.9	10146.5	10147.9	10009.8	9988.2
C150.0	11791.5	11589.0	11309.9	11175.4	11409.1	11868.2	12553.5	12852.9	13408.6	13420.1
C180.0	11616.8	11426.8	11098.6	10839.8	10745.4	10534.2	10420.8	10158.0	10239.6	10554.0
C210.0	13012.6	12703.4	12519.5	12308.3	12031.8	11684.7	11609.3	11571.4	12010.2	12650.5
C240.0	2495.2	2360.7	2218.2	2097.0	2012.3	1898.1	1839.4	1765.3	1695.6	1651.5
C270.0	13352.2	12984.8	12773.6	12513.4	12253.2	11977.6	11804.2	12349.8	12956.1	14263.7
C300.0	2601.5	2467.8	2355.4	2249.1	2131.8	2061.7	1983.6	1901.6	1843.4	1781.2
C330.0	13638.8	13176.2	12821.6	12586.1	12469.3	12070.6	12322.4	11862.0	11815.3	12029.2
C360.0	2937.9	2773.4	2621.3	2515.0	2424.2	2334.2	2254.8	2192.2	2134.9	2083.3
C\G	G50.0	G51.0	G52.0	G53.0	G54.0	G55.0	G56.0	G57.0	G58.0	G59.0
C0.0	2025.5	1956.3	1905.6	1906.9	1949.2	2150.8	2446.7	2691.0	2926.0	3046.9
C30.0	14833.5	13701.9	13353.5	13059.3	13945.7	15668.7	15468.5	15932.4	16320.1	17285.9
C60.0	10073.8	10888.7	11664.5	12427.8	12976.0	13159.9	13297.0	13246.3	13505.6	13828.9
C90.0	14642.5	13889.3	13646.3	14883.8	15657.3	14493.9	14844.9	15604.3	16280.8	17160.2
C120.0	10247.1	10936.4	11894.7	12458.3	12891.8	12991.4	12998.9	13200.0	13312.0	13458.0
C150.0	13208.8	12931.0	13125.9	14046.3	14589.6	14508.9	15401.9	15859.7	16482.4	17819.0
C180.0	10952.7	11563.9	12361.2	12948.6	13154.6	13460.2	13637.5	13911.8	14000.9	14213.4
C210.0	13280.3	14105.4	14190.9	14075.4	13593.8	13676.7	14216.1	15390.5	15622.0	16101.4
C240.0	1588.9	1567.3	1581.9	1678.9	1865.4	2123.0	2358.5	2483.3	2518.1	2541.9
C270.0	15643.6	16608.1	16333.8	15498.9	14527.9	14000.9	15105.1	15751.6	15853.5	16921.2
C300.0	1712.4	1661.2	1646.3	1698.7	1890.1	2163.1	2413.2	2544.6	2568.8	2590.4
C330.0	12517.3	13505.6	14536.7	14912.9	14394.7	13551.0	13249.0	14017.2	15319.0	16332.4
C360.0	2025.5	1956.3	1905.6	1906.9	1949.2	2150.8	2446.7	2691.0	2926.0	3046.9

Light intensity data Unit[cd]

C\G	G60.0	G61.0	G62.0	G63.0	G64.0	G65.0	G66.0	G67.0	G68.0	G69.0
C0.0	3111.3	3183.1	3292.1	3393.5	3462.3	3491.0	3473.3	3452.6	3461.4	3442.4
C30.0	18388.8	20556.8	23493.0	24336.6	24581.8	26964.9	30269.8	34835.9	39823.2	39324.0
C60.0	13940.9	14055.1	13755.7	13645.0	13564.7	13562.1	13333.2	13604.9	13357.0	13746.9
C90.0	20066.4	22324.7	21415.4	21497.4	22835.4	24729.1	26122.6	28624.9	30417.1	6418.3
C120.0	13545.8	13483.1	13466.4	13371.1	13339.4	13222.5	13123.3	13210.2	12852.9	12854.3
C150.0	19657.6	21390.3	21719.7	22349.9	23939.2	25429.4	27874.3	33164.5	35045.8	30352.7
C180.0	14413.6	14451.1	14360.7	14260.2	14377.0	14362.0	14282.7	14195.8	14270.3	15409.4
C210.0	16786.7	17567.2	18993.4	20760.5	22642.7	23340.8	23943.2	26453.4	29419.6	33719.3
C240.0	2534.4	2580.3	2623.5	2632.8	2616.0	2583.4	2561.8	2555.2	2532.2	2504.9
C270.0	17611.3	18329.7	20478.7	25417.0	26650.5	25393.2	25244.6	28711.7	31899.7	35716.1
C300.0	2626.6	2678.6	2714.8	2711.3	2695.0	2655.3	2633.7	2622.2	2605.0	2588.7
C330.0	16557.8	17465.4	18189.9	19813.2	22354.7	25242.4	25893.8	28108.0	30739.0	34763.1
C360.0	3111.3	3183.1	3292.1	3393.5	3462.3	3491.0	3473.3	3452.6	3461.4	3442.4
C\G	G70.0	G71.0	G72.0	G73.0	G74.0	G75.0	G76.0	G77.0	G78.0	G79.0
C0.0	3371.0	3315.4	3204.3	3199.9	3431.0	4387.5	5098.8	4741.2	4050.1	3508.2
C30.0	30900.0	6086.7	5441.9	4347.8	3423.5	2966.2	2739.5	2575.9	2391.5	2254.4
C60.0	15304.0	16922.5	16980.3	15799.3	14661.0	14084.2	13212.4	12620.1	12205.1	11777.8
C90.0	4593.0	4453.2	3920.9	3065.4	2521.2	2272.9	2093.0	1932.5	1824.4	1674.5
C120.0	13689.1	14882.4	16580.3	18884.1	18701.9	16511.0	15093.7	13905.6	13086.7	12361.2
C150.0	6382.2	5645.2	4908.3	4650.3	4259.2	3648.0	3123.2	2874.4	2687.0	2484.2
C180.0	16555.1	17381.1	19447.7	19151.7	17226.8	16208.1	15223.3	14369.5	13549.7	13144.4
C210.0	37085.9	36362.7	31771.4	25235.8	21560.0	19642.6	17176.5	15849.5	15054.9	14154.3
C240.0	2478.4	2447.6	2589.6	3114.8	3343.7	3308.8	3054.8	2711.7	2480.2	2292.3
C270.0	40576.9	37235.4	26096.2	17427.9	15443.4	16948.5	14803.5	12918.2	12139.8	11674.6
C300.0	2563.1	2541.9	2499.6	2504.4	2803.9	3746.7	4223.5	3901.1	3245.8	2816.7
C330.0	40497.5	44544.1	42414.1	30828.1	21255.8	20186.8	20710.2	18528.2	16324.9	14883.8
C360.0	3371.0	3315.4	3204.3	3199.9	3431.0	4387.5	5098.8	4741.2	4050.1	3508.2
C\G	G80.0	G81.0	G82.0	G83.0	G84.0	G85.0	G86.0	G87.0	G88.0	G89.0
C0.0	3157.6	2956.0	2826.8	2697.6	2575.9	2501.4	2419.3	2279.5	2137.5	1966.9
C30.0	2115.9	1969.9	1780.3	1623.3	1473.8	1312.9	1165.1	1014.7	841.4	739.1
C60.0	11537.4	11332.4	11049.7	10924.0	10683.7	10041.1	9360.7	8774.6	8024.0	7818.9
C90.0	1514.4	1384.3	1244.5	1131.2	1029.7	909.8	817.2	683.1	577.3	525.2
C120.0	12086.9	11741.2	11206.7	10863.6	10471.1	9995.7	9359.3	8852.6	8159.8	7743.5
C150.0	2299.4	2037.9	1813.8	1625.5	1483.1	1339.8	1192.0	1013.0	894.8	823.3
C180.0	12632.9	12172.5	11705.9	11254.8	10735.3	10293.8	9564.4	8737.1	8411.2	8046.5
C210.0	13508.3	13132.1	12435.3	11716.0	11187.7	10564.2	10039.8	9548.1	9044.9	8582.3
C240.0	2179.0	2057.3	1964.2	1903.8	1827.1	1734.5	1605.2	1472.9	1324.8	1162.5
C270.0	11230.5	10819.5	10447.3	9940.6	9393.3	9036.1	8593.8	8294.3	7849.4	7494.4
C300.0	2579.0	2430.4	2282.2	2165.3	2096.5	1996.0	1871.2	1737.5	1558.5	1390.0
C330.0	14208.6	13818.7	13024.1	12655.4	12260.7	11463.4	10779.4	10276.2	9590.9	9048.9
C360.0	3157.6	2956.0	2826.8	2697.6	2575.9	2501.4	2419.3	2279.5	2137.5	1966.9

Light intensity data Unit[cd]

C\G	G90.0									
C0.0	1775.9									
C30.0	695.9									
C60.0	7529.6									
C90.0	512.9									
C120.0	7640.3									
C150.0	783.2									
C180.0	7826.4									
C210.0	8061.5									
C240.0	956.1									
C270.0	7175.1									
C300.0	1224.7									
C330.0	8511.7									
C360.0	1775.9									

Zonal Luminous Flux Data

Gamma [°]	Imean [cd]	Zonal Flux [lm]	Sum Flux [lm]	Zonal Flux [%]	Sum Flux [%]
0.0	880922.70	0.00	0.00	0.00	0.00
0.0-1.0	862844.30	834.36	834.36	0.70	0.70
1.0-2.0	795254.70	2379.86	3214.22	1.99	2.69
2.0-3.0	695272.60	3564.85	6779.07	2.99	5.68
3.0-4.0	574969.00	4251.90	11030.98	3.56	9.24
4.0-5.0	445276.50	4389.04	15420.02	3.68	12.92
5.0-6.0	339086.30	4122.04	19542.06	3.45	16.37
6.0-7.0	255654.80	3691.55	23233.60	3.09	19.47
7.0-8.0	197383.70	3242.31	26475.91	2.72	22.18
8.0-9.0	156202.40	2865.62	29341.54	2.40	24.58
9.0-10.0	126639.70	2559.62	31901.15	2.14	26.73
10.0-11.0	104457.10	2309.13	34210.28	1.93	28.66
11.0-12.0	86145.35	2083.56	36293.84	1.75	30.41
12.0-13.0	73137.76	1890.29	38184.13	1.58	31.99
13.0-14.0	61584.33	1724.43	39908.56	1.44	33.44
14.0-15.0	53628.98	1581.70	41490.26	1.33	34.76
15.0-16.0	48338.96	1494.12	42984.38	1.25	36.02
16.0-17.0	43727.25	1433.72	44418.09	1.20	37.22
17.0-18.0	40076.87	1381.75	45799.83	1.16	38.37
18.0-19.0	36952.05	1340.15	47139.98	1.12	39.50
19.0-20.0	34063.65	1299.78	48439.76	1.09	40.59
20.0-21.0	30995.17	1249.26	49689.01	1.05	41.63
21.0-22.0	25704.79	1139.41	50828.42	0.95	42.59
22.0-23.0	22909.80	1020.07	51848.50	0.85	43.44
23.0-24.0	21812.67	977.79	52826.28	0.82	44.26
24.0-25.0	20587.09	964.08	53790.36	0.81	45.07
25.0-26.0	19618.73	949.06	54739.42	0.80	45.86
26.0-27.0	19187.84	949.41	55688.83	0.80	46.66
27.0-28.0	18696.63	959.15	56647.98	0.80	47.46
28.0-29.0	18328.18	968.67	57616.66	0.81	48.28
29.0-30.0	17702.44	972.82	58589.48	0.82	49.09
30.0-31.0	16948.26	964.28	59553.75	0.81	49.90
31.0-32.0	16117.41	947.29	60501.05	0.79	50.69
32.0-33.0	15175.03	921.89	61422.93	0.77	51.46
33.0-34.0	14146.95	887.37	62310.30	0.74	52.21
34.0-35.0	13219.09	849.89	63160.19	0.71	52.92
35.0-36.0	12252.08	811.01	63971.20	0.68	53.60
36.0-37.0	11482.09	774.08	64745.27	0.65	54.25
37.0-38.0	10774.84	742.91	65488.18	0.62	54.87
38.0-39.0	10285.48	718.85	66207.02	0.60	55.47
39.0-40.0	9957.96	706.02	66913.05	0.59	56.06

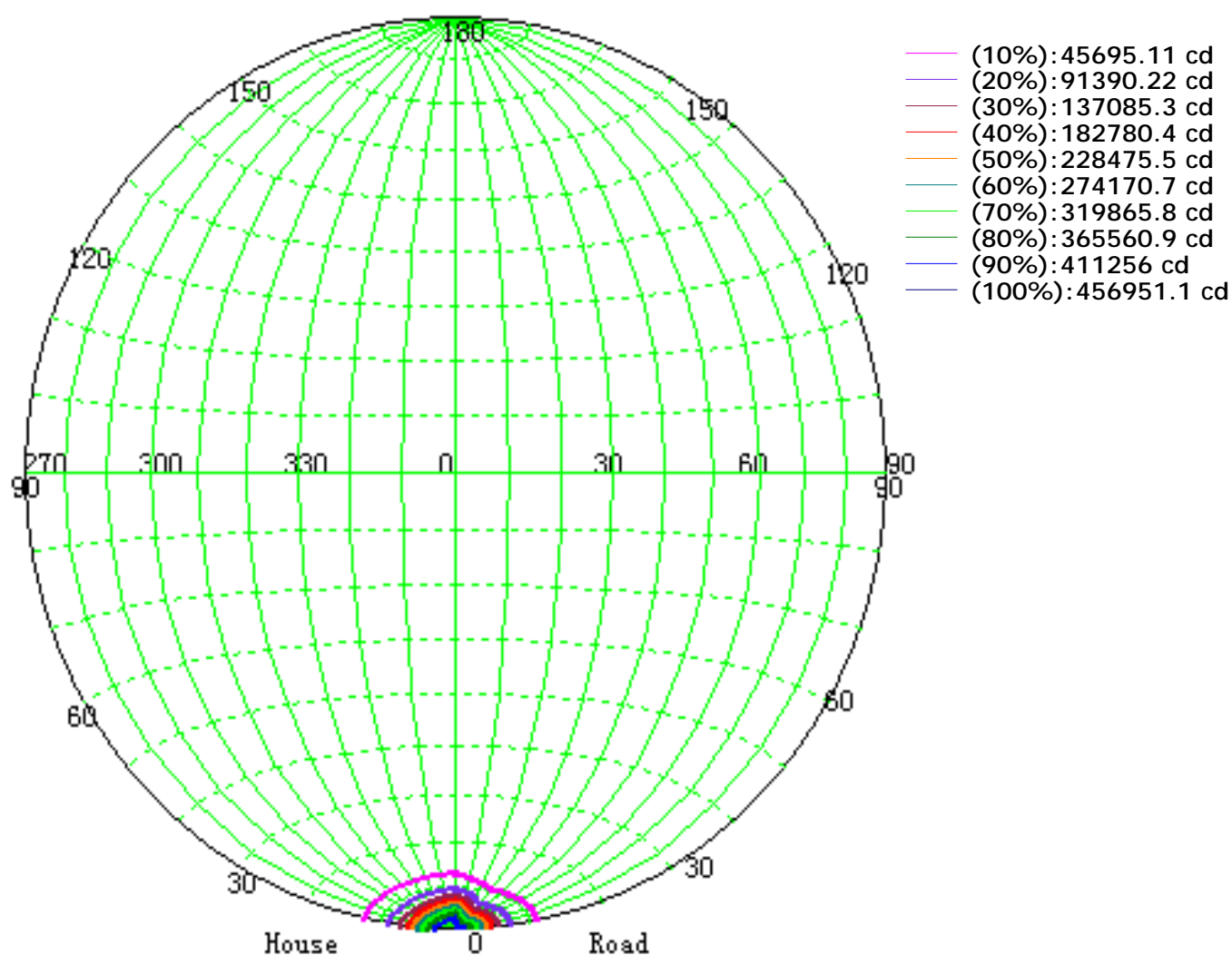
Zonal Luminous Flux Data

Gamma [°]	Imean [cd]	Zonal Flux [lm]	Sum Flux [lm]	Zonal Flux [%]	Sum Flux [%]
40.0-41.0	9712.33	700.45	67613.50	0.59	56.65
41.0-42.0	9483.34	697.41	68310.91	0.58	57.24
42.0-43.0	9341.56	697.33	69008.23	0.58	57.82
43.0-44.0	9217.93	700.49	69708.72	0.59	58.41
44.0-45.0	9139.65	705.50	70414.23	0.59	59.00
45.0-46.0	9196.61	717.09	71131.32	0.60	59.60
46.0-47.0	9349.71	737.64	71868.95	0.62	60.22
47.0-48.0	9596.68	765.91	72634.85	0.64	60.86
48.0-49.0	9863.15	799.13	73433.98	0.67	61.53
49.0-50.0	10060.53	830.69	74264.66	0.70	62.22
50.0-51.0	10276.26	860.42	75125.07	0.72	62.95
51.0-52.0	10520.09	892.39	76017.46	0.75	63.69
52.0-53.0	10799.65	927.41	76944.87	0.78	64.47
53.0-54.0	10953.01	958.77	77903.64	0.80	65.27
54.0-55.0	10995.71	979.75	78883.40	0.82	66.09
55.0-56.0	11286.44	1006.87	79890.27	0.84	66.94
56.0-57.0	11719.39	1051.88	80942.16	0.88	67.82
57.0-58.0	12059.11	1099.60	82041.76	0.92	68.74
58.0-59.0	12608.30	1153.22	83194.97	0.97	69.71
59.0-60.0	13270.09	1222.59	84417.57	1.02	70.73
60.0-61.0	14005.46	1301.64	85719.22	1.09	71.82
61.0-62.0	14541.94	1375.58	87094.80	1.15	72.97
62.0-63.0	15349.04	1453.75	88548.55	1.22	74.19
63.0-64.0	16088.23	1542.62	90091.16	1.29	75.48
64.0-65.0	16748.00	1625.04	91716.19	1.36	76.85
65.0-66.0	17396.35	1703.58	93419.77	1.43	78.27
66.0-67.0	19128.27	1836.56	95256.31	1.54	79.81
67.0-68.0	20535.28	2009.23	97265.56	1.68	81.50
68.0-69.0	19236.68	2028.97	99294.54	1.70	83.20
69.0-70.0	17833.01	1903.83	101198.40	1.60	84.79
70.0-71.0	15984.85	1747.89	102946.30	1.46	86.26
71.0-72.0	14654.54	1593.16	104539.40	1.33	87.59
72.0-73.0	12350.79	1412.18	105951.60	1.18	88.77
73.0-74.0	10719.28	1212.85	107164.40	1.02	89.79
74.0-75.0	10325.94	1111.95	108276.40	0.93	90.72
75.0-76.0	9712.69	1063.73	109340.10	0.89	91.61
76.0-77.0	8910.66	992.91	110333.00	0.83	92.44
77.0-78.0	8253.35	918.80	111251.80	0.77	93.21
78.0-79.0	7752.19	859.97	112111.80	0.72	93.94
79.0-80.0	7420.82	818.01	112929.80	0.69	94.62
80.0-81.0	7154.34	788.20	113718.00	0.66	95.28

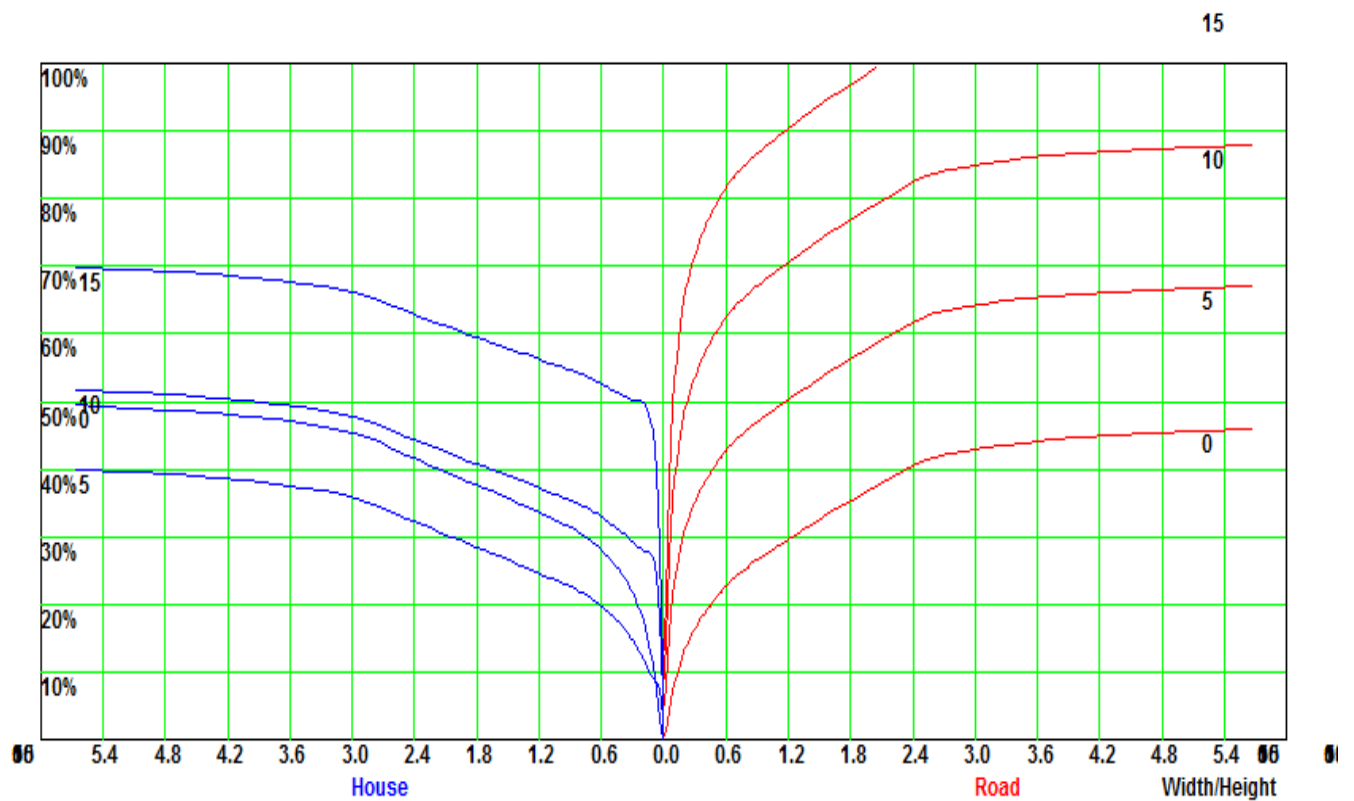
Zonal Luminous Flux Data

[illegible]

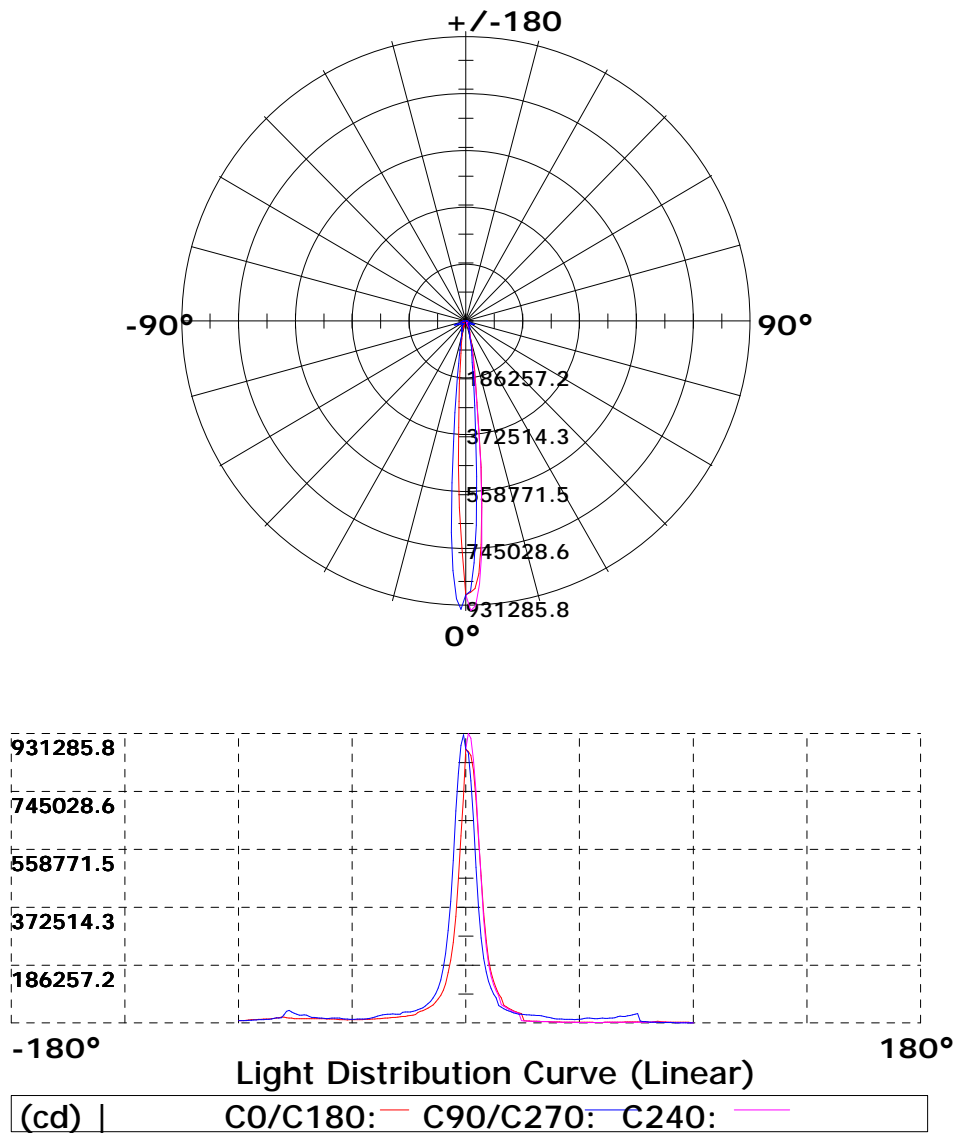
Iso-Candela [cd]

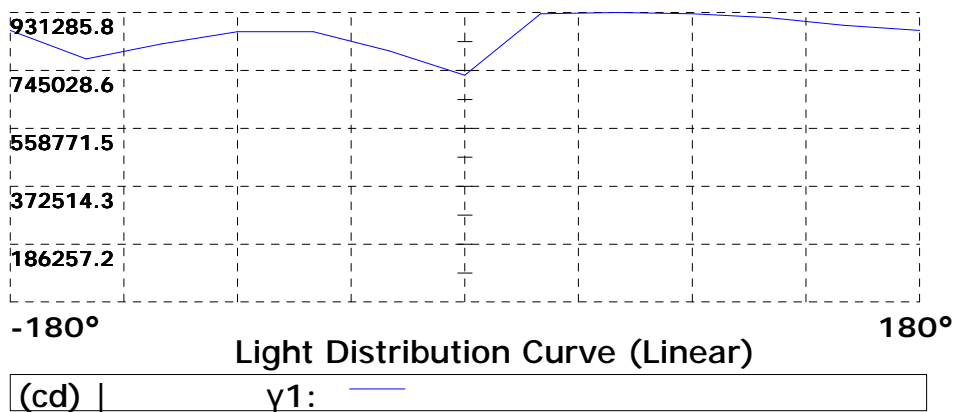
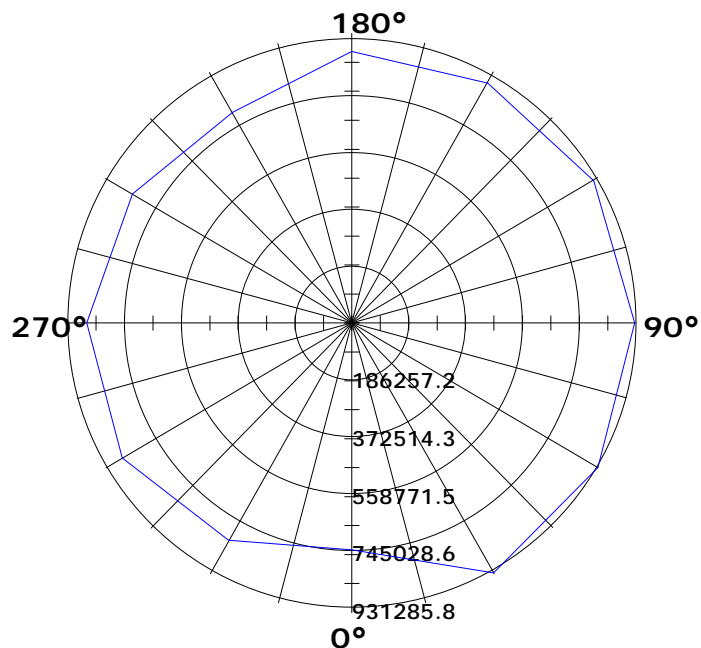


Coefficient Utilization Curve

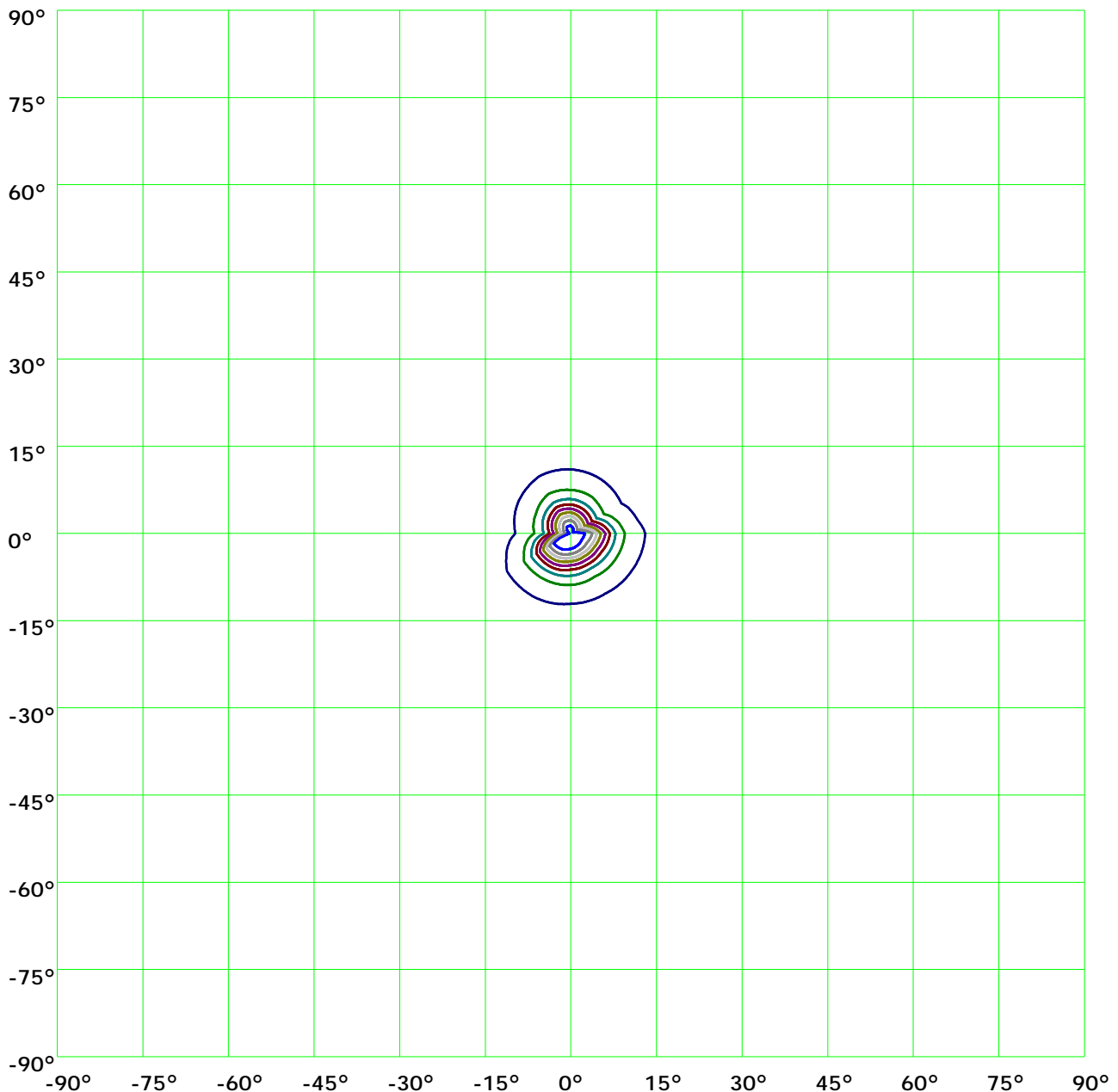


Light Distribution Curve [Unit: cd]



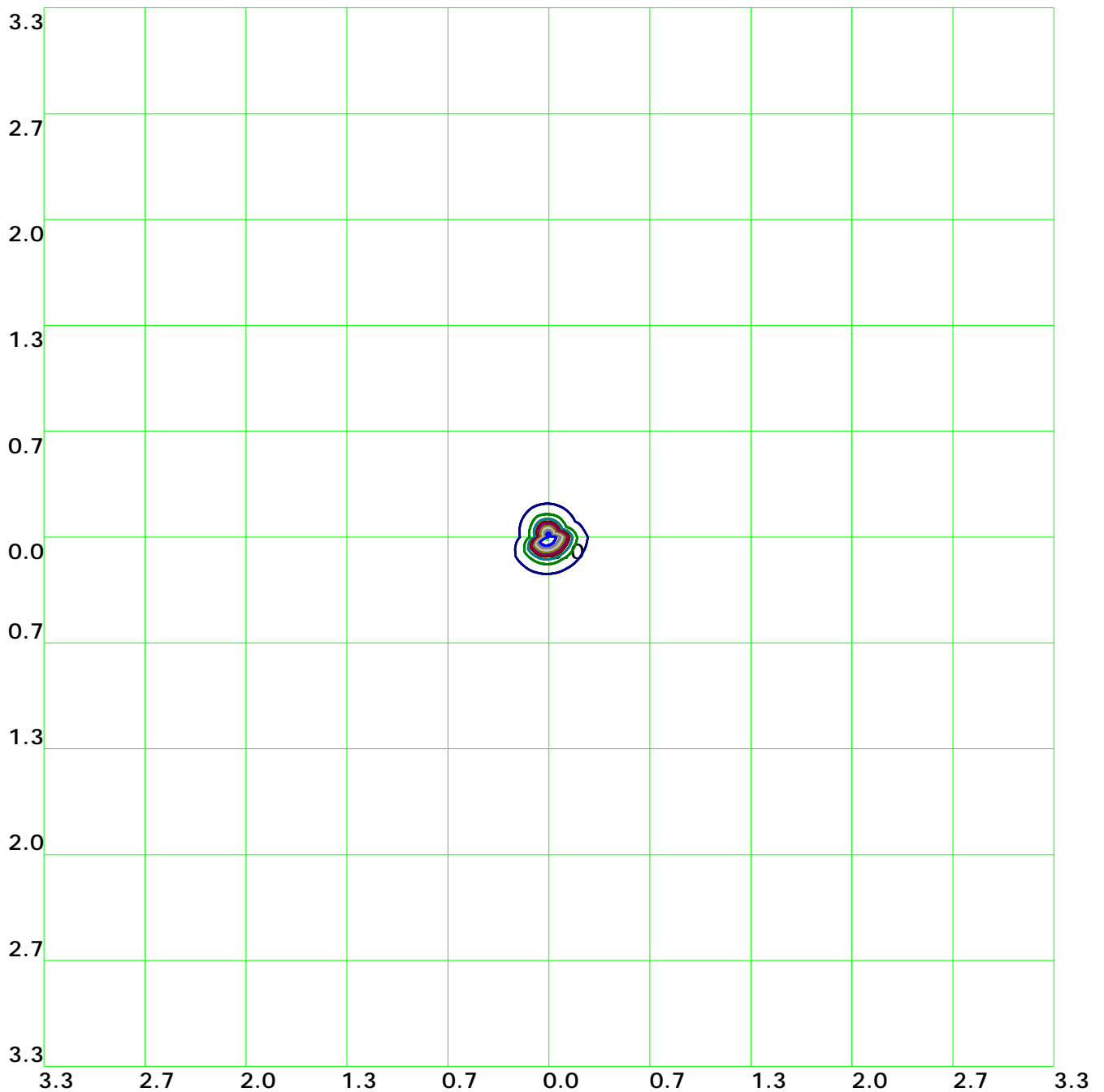


Isocandela(rectangle)



(10%): 93128.6cd (20%): 186257.2cd (30%): 279385.8cd (40%): 372514.3cd
(50%): 465642.9cd (60%): 558771.5cd (70%): 651900.cd (80%): 745028.6cd
(90%): 838157.1cd (100%): 931285.8cd

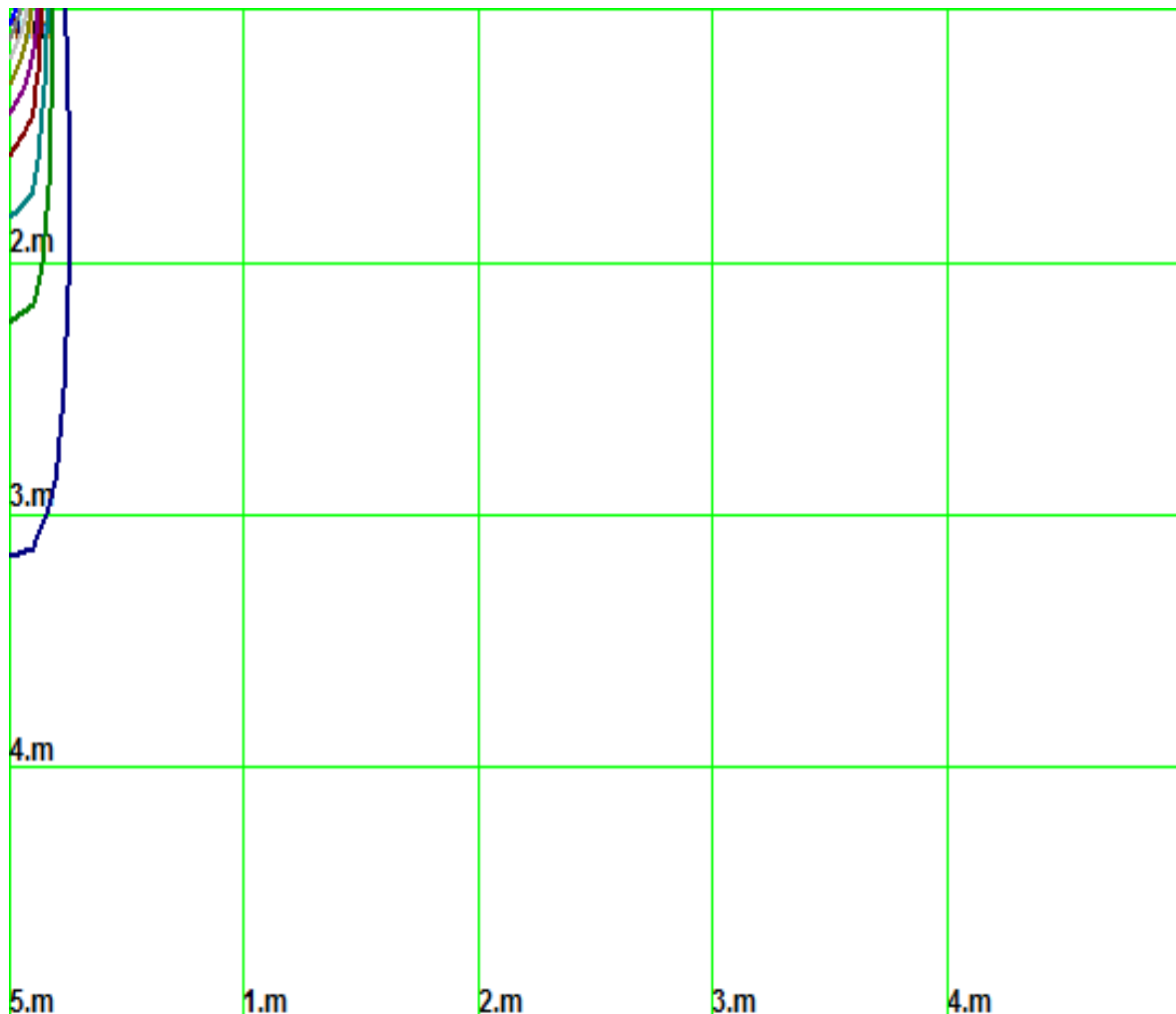
Isolx curve



Height: 1 m

(10%): 93128.6lx (20%): 186257.2lx (30%): 279385.8lx (40%): 372514.3lx
(50%): 465642.9lx (60%): 558771.5lx (70%): 651900.1lx (80%): 745028.6lx
(90%): 838157.1lx (100%): 930354.5lx

Space Isolx Curve



(10%): 93128.6lx (20%): 186257.2lx (30%): 279385.8lx (40%): 372514.3lx
 (50%): 465642.9lx (60%): 558771.5lx (70%): 651900.lx (80%): 745028.6lx
 (90%): 838157.1lx (100%): 930354.5lx

Luminance Limiting Curve

Diameter: 579mm

Length: 579mm

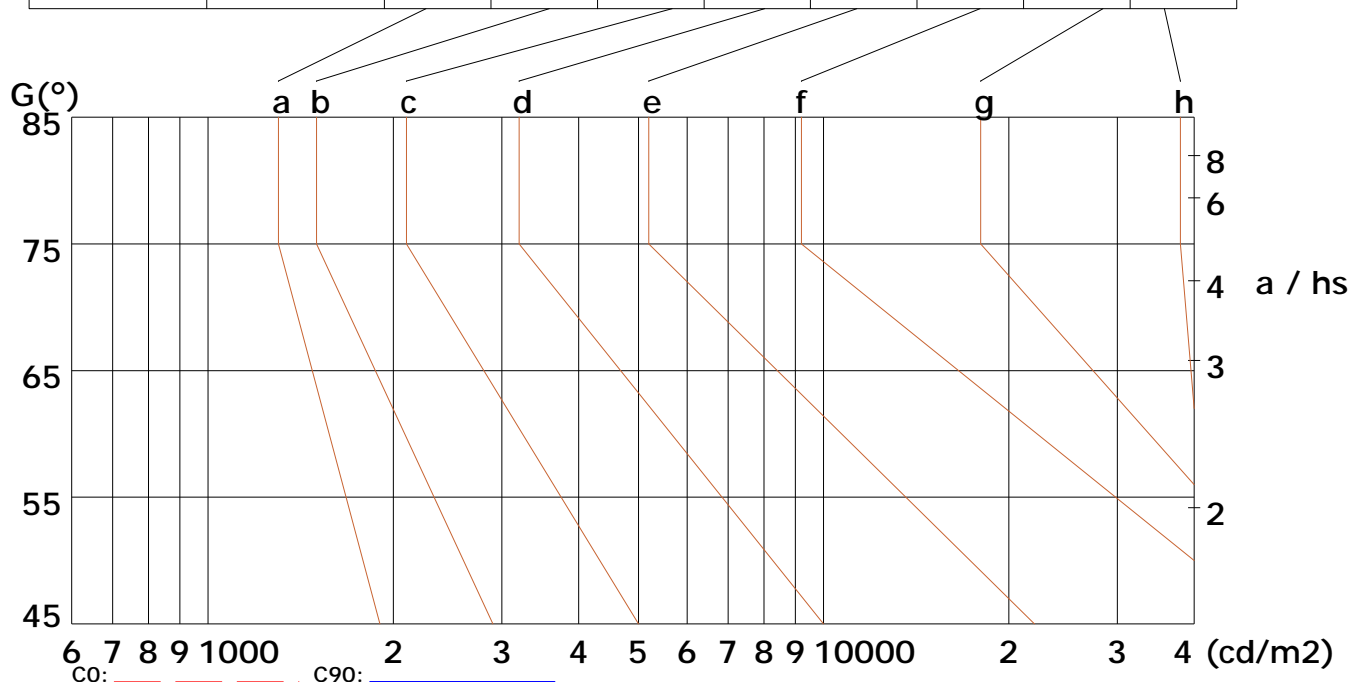
Width: 202mm

Height: 846mm

(cd/m²)

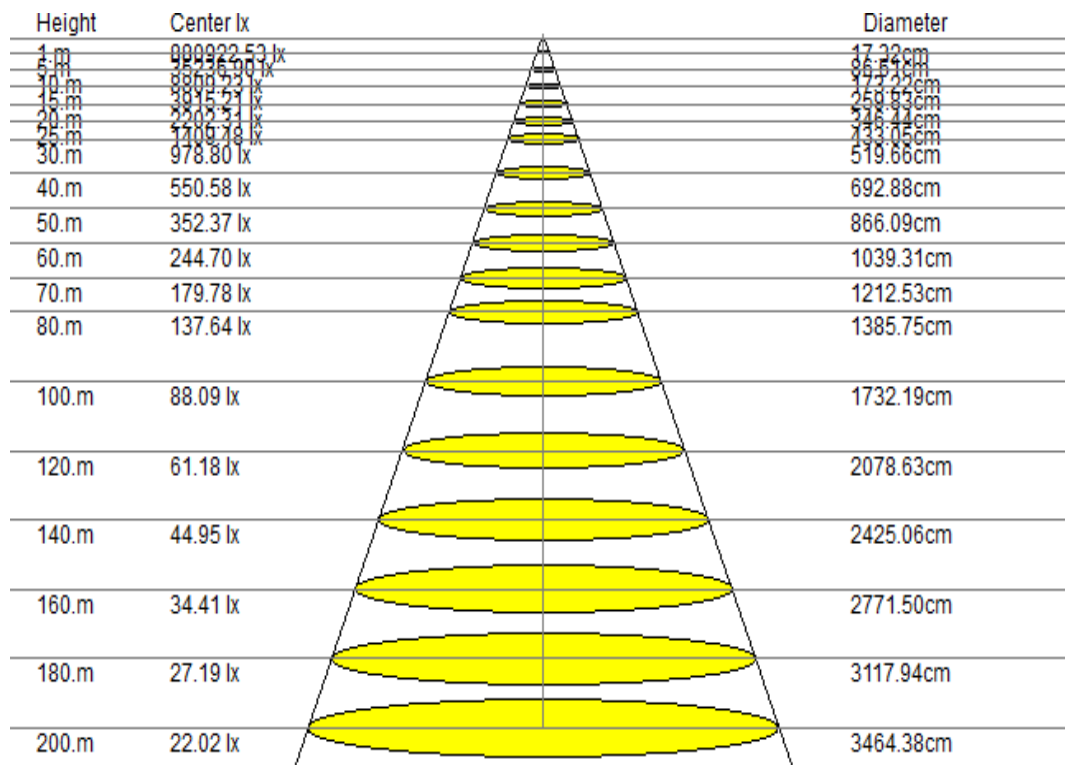
γ	45°	50°	55°	60°	65°	70°	75°	80°	85°
C0	4282735694936317341003311462850357221954218026260965								
C90	82527787789374315556320650824640423804454592717495								

Glare	Quality	Service Values Illuminance (lx)							
1.15	A	2000	1000	500	≤300				
1.5	B		2000	1000	500	≤300			
1.85	C			2000	1000	500	≤300		
2.2	D				2000	1000	500	≤300	
2.55	E					2000	1000	500	≤300



Lum. Limiting Curve (C0/C90)

Lux-Distance Curve



Beam Angle: 9.90°(50%Imax)

Coefficients of Utilization

RHOCC	80			70			50			30			10			0
RHOW	50	30	10	50	30	10	50	30	10	50	30	10	50	30	10	0
RCR	COEFFICIENTS OF UTILIZATION FOR RHOFC=20															
0	1.19	1.19	1.19	1.16	1.16	1.16	1.11	1.11	1.11	1.06	1.06	1.06	1.02	1.02	1.02	1.00
1	1.03	1.01	1.00	1.02	1.00	0.98	0.99	0.96	0.94	0.94	0.91	0.89	0.88	0.85	0.83	0.78
2	0.90	0.88	0.86	0.90	0.87	0.84	0.87	0.84	0.81	0.84	0.80	0.77	0.79	0.75	0.72	0.67
3	0.81	0.78	0.76	0.80	0.77	0.75	0.79	0.75	0.72	0.76	0.72	0.68	0.73	0.68	0.64	0.59
4	0.74	0.71	0.70	0.74	0.70	0.68	0.73	0.68	0.65	0.71	0.66	0.62	0.68	0.63	0.58	0.54
5	0.68	0.66	0.65	0.68	0.65	0.63	0.68	0.64	0.60	0.66	0.61	0.57	0.64	0.59	0.54	0.50
6	0.64	0.62	0.61	0.64	0.61	0.59	0.64	0.60	0.57	0.63	0.58	0.54	0.61	0.56	0.51	0.47
7	0.61	0.59	0.58	0.61	0.58	0.56	0.61	0.57	0.54	0.60	0.55	0.51	0.59	0.53	0.49	0.45
8	0.58	0.56	0.55	0.59	0.56	0.54	0.58	0.54	0.52	0.58	0.53	0.49	0.56	0.51	0.47	0.43
9	0.56	0.54	0.53	0.56	0.54	0.52	0.56	0.52	0.50	0.55	0.51	0.47	0.54	0.49	0.45	0.42
10	0.54	0.53	0.52	0.54	0.52	0.50	0.54	0.51	0.48	0.54	0.49	0.46	0.53	0.47	0.43	0.40

Indoor Budgetary Estimate Chart

